

King Edward's Hospital Fund
for London
Annual Report



1891-1892

1892-1893

1893-1894

1894-1895

1895-1896

1896-1897

1897-1898

1898-1899

1899-1900

1900-1901

1901-1902

1902-1903

1903-1904

1904-1905

1905-1906

1906-1907

1907-1908

1908-1909

1909-1910

1910-1911

1911-1912

1912-1913

1913-1914

1914-1915

1915-1916

1916-1917

1917-1918

1918-1919

1919-1920

1920-1921

1921-1922

1922-1923

**KING EDWARD'S HOSPITAL FUND
FOR LONDON**

Patron: Her Majesty The Queen

Governors: HRH Princess Alexandra,
The Hon Mrs Angus Ogilvy GCVO
Lord Ashburton KG KCVO JP
Lord Cottesloe GBE TD

Treasurer: A H Carnwath

Chairman of the Management Committee: Lord Hayter

Secretary: G A Phalp CBE TD

14 Palace Court London W2 4HT
Telephone: 01-727 0581

CONTENTS

	page
Report 1972	3
Finance	13
Contributors	17
Grants made in 1972	18
Experiments, enquiries and educational projects	22
King's Fund Centre conferences, meetings and exhibitions	24
King's Fund College courses and seminars	26
General Council and committees	27
Hospital visitors	30
Staff directory	31

The year which was to bring more change than usual began, paradoxically, with a look back. The 75th anniversary of the Fund was marked by an exhibition of documents, pictures and news cuttings dating from 1897 which trace the story of its service to health care in London and, in more recent years, nationally. This affectionate glimpse at the past gave encouragement, perhaps, to work in progress and to changes accomplished in preparation for the future.

NEW NAMES

Two establishments were renamed. The King's Fund College of Hospital Management became the **King's Fund College**, and the Hospital Centre, the **King's Fund Centre**. The new simplified names epitomise the extension of services to all health groups whose work will be integrated from April 1974 in the reorganised National Health Service.

Though in some ways the extension of services is a natural development, it is also an outcome of long-term planning in accord with the Fund's basic policy. Experimental services are set up, reviewed after a time, changed as need indicates. Those no longer needed may be closed. Those which prove their usefulness may be handed over to, or shared with, other bodies for further development. Thus, resources never become permanently tied to services which are no longer experimental, and the innovating role of the Fund can be maintained.

One example of how this policy works is the closure of the Hospital Catering Advisory Service. The service was set up in 1950 to co-ordinate and extend activities, initiated by the Fund since the early days of World War II, to improve hospital food. Over the years, £½ million have been provided for catering schemes in the metropolitan area, while the HCAS's experiments, innovations and investigations, together with the work of the former School of Hospital Catering, have helped bring widespread improvement to technique and management. Advisory services established by the regional hospital boards are now well able to take over and develop regionally the Fund's former central role. But closing a service does not mean that the Fund takes no further interest. Experiment and investigation into catering problems will be supported and financed from time to time.

NEW ORGANISATION

A more fundamental outcome of the constant review of services is the re-shaping of the Fund's own organisation.

A new **Research Committee**, with Sir George Godber as chairman, will assist the Management Committee in formulating policy for research and experiment, examine specific proposals for projects, both 'in house' and from outside bodies, and make recommendations to the Management Committee for financing such projects. The new committee will centralise the numerous research and other experimental activities hitherto supported and financed by

all the Fund's committees, but increasingly within the last ten years by the Hospital Development Committee.

That committee has, since 1960, performed a dual function, both parts of which have greatly expanded. It was first set up to examine and support research proposals and to guide the development of the Division of Hospital Facilities which later merged with the Hospital Catering Advisory Service to become the Hospital Centre.

KING'S FUND CENTRE

Opening in 1963, the Centre soon set about achieving its aims to become an impartial forum, a source of information and a focus for introducing new ideas and practical innovation in hospitals, especially those in the metropolitan area. But it was not long before the Centre's activity extended beyond hospitals and its national role began to emerge. Since 1970, work has concentrated on four main themes: care of the elderly, and of the mentally handicapped, development of voluntary help and the integration of the health services. No longer a 'hospital' centre, its help is now sought by people of all kinds in statutory and voluntary organisations throughout the country and, increasingly, abroad.

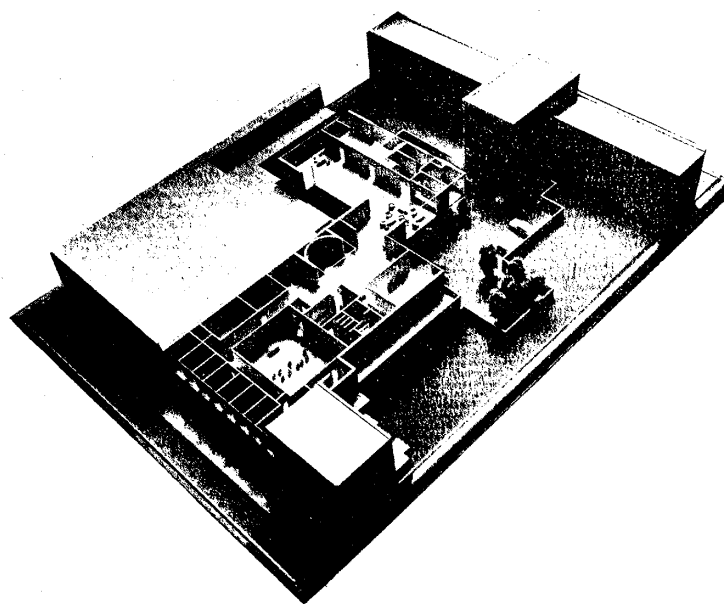
These factors inevitably led to consideration of the developing role of the Centre in relation to the purposes for which the Fund exists. In this the Fund has been much indebted to DHSS.

the metropolitan hospital authorities and the voluntary organisations for their help and advice. What now emerges is a reconstituted Centre which no longer restricts its official function to the needs of hospitals as such but instead exists to support and inform all aspects of the health and related social services as a national institution operating in partnership between the Fund and DHSS.

For this purpose, the Centre's management and financing have been reorganised. The Hospital Development Committee has been disbanded and in its place the Fund has set up a new standing committee to act as the supervising body for the Centre and to be known as the **King's Fund Centre Committee**. Representation on the committee is shared equally between the Fund and DHSS, and all members are appointed by the Governors of the Fund in the normal way. The first chairman of the new committee, nominated by the Fund's Management Committee in consultation with DHSS, is Sir Francis Avery Jones. The director of the Centre will continue to be a senior officer of the Fund and the general administration will remain the Fund's responsibility.

The changing role of the Centre and its acceptance as a national institution have raised considerations of where and how it should be housed. The present premises in Nutford Place are held on lease and whilst this arrangement has been satisfactory during the early experimental period, it is less suitable for long-term occupation. Moreover, as the work of the

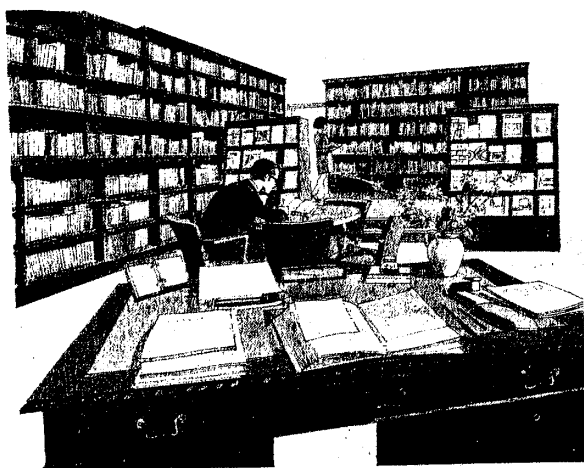
Centre expands so the building which houses it seems to contract. For some time there has been a search for suitable premises, and a site for a new King's Fund Centre has now been acquired in the London Borough of Camden. Permission to build has been granted and, subject to the borough council's approval of detailed architect's plans, the Fund hopes to start building early in 1974. As well as providing better facilities for the Centre's own work and for those organisations which share its accommodation and general services, the new building will also include a number of residential flats, some of which it is hoped to design for the accommodation of handicapped people.



KING'S FUND COLLEGE

The rebuilding of the King's Fund College was completed in autumn 1972. This extensive reconstruction of premises in Palace Court not only improves the setting in which members of courses live and work, it enables the staff to pursue more effectively the policy of the College. In addition, it rationalises the use of College premises and enables the Fund to sell buildings previously used by the College in Holland Park.

All the major courses can now be brought together in one area in which members and staff can be in touch with one another, and the enlarged library and information room become accessible to all. Such considerations assume greater importance as the educational policy concentrates on helping people of different professions to prepare for working together in managing an integrated health service.



MANAGEMENT OF CHANGE

Intensive preparation in close consultation with DHSS was given to a series of experimental courses on the management of integrated health care. The courses had three main objectives: to help senior managers comprehend the functions and problems of those sectors of the health services unfamiliar to them; evaluate the performance of operational services against specific objectives; develop the ability to innovate and achieve change. The successful introduction of the experimental courses was greatly helped by the use of material from a series of seminars on the management of change, arranged jointly by the Oxford Centre for Management Studies and the College, for chief officers of the health services. This is now added to experience derived from the long-standing collaboration with research groups studying organisational change at Brunel University and other centres.

Training needs for the new integrated service have been clearly defined: knowledge of organisation, consensus working, and the development and use of health intelligence systems. In short, the change process itself must be managed and controlled. Among the many problems to be tackled will be the proposed method, new to many in the health services, of reaching decisions by consensus backed by information. The new integrated service will demand, it seems, not only an ability to manage change but also an ability to change the style of management. These issues should not only be studied academically; they must relate to practice.



NEW STAFFING

The College, in common with all the Fund's services, has devised many ways of keeping itself closely allied to health service practice. It is convinced of the value of linking a management course with an officer who has recent experience in managing the provision of health care and who is able, thereby, to correlate theory and practice while acting as tutor to the course. This year, four fellowships were granted to the College, under the Secretary of State's fellowship scheme. Two are held by public health doctors and two by hospital administrators who are working with the tutorial staff for the academic year.

COLLECTING AND USING INFORMATION

Material used for study, particularly for project work, must also relate to practice, and can only be collected from practical sources. Among the ventures supported by the Fund are a number which will help augment the information services and work programmes of both the College and the Centre.

A grant was given to Wessex Regional Hospital Board for the experimental appointment of an information officer in the board's planning division. The experiment is to be assessed by the Association of Special Libraries and Information Bureaux (ASLIB), which is already working with the Centre and Wessex on other information projects.

The same planning division has seconded one of its research officers to work with the local health and social service authorities in Reading in establishing an information unit for that area and in providing information for the College.



The Fund is also supporting a new appointment at St Thomas' Hospital, London, for an experiment designed to provide a more effective interrelation between the organisational and finance planning of the hospital authority, and the research policies and findings of the as-

sociated university department of epidemiology and social medicine. The difficulties of providing a responsive and informed reaction in hospital practice to the indications of medical research are well known. By contrast, the extent to which the expertise of medical investigation can be linked to the policy planning of health authorities is, perhaps, insufficiently recognised or applied. The experiment at St Thomas' seeks to explore and coordinate these important issues through the establishment of a formal administrative structure under the Board of Governors, which will be particularly concerned with the complex and highly relevant area of hospital-community relationship.

The main purpose of these and other new or continuing projects listed in the pages that follow, is to help develop good practice in the care of patients, not only in the locality where the project is undertaken but generally, by making the findings known through conferences, training courses and the information services, as well as by publications.

PUBLISHING

The booklist and supplement carry some 30 titles covering a variety of projects undertaken or supported by the Fund in recent years. Most in demand by hospitals are those offering help on single, defined problems – job descriptions, staff assessment and allocation, selection procedures – and those reporting studies on which improvements in direct services to patients can be based. Though most orders come from hospitals, there is a growing readership among

community health staff, schools and the general public, particularly for books on volunteers and care of the elderly and the mentally handicapped – three of the four main themes on which the Centre is working.

Orders for books in 1972 increased threefold over the previous year and fivefold over 1970. This is the outcome of changes in publishing policy effected during the same period. A more stringent method of selecting and approving material for publishing has been adopted. Free distribution to hospitals has been abandoned and new books are publicised in this country in line with the normal practice of most publishing houses. The Fund also has agency arrangements with three organisations abroad. Overseas interest has developed alongside the general extension of the Fund's international activity.

INTERNATIONAL EXTENSION

Educational ventures, exchange tours and visits for groups and individuals form part of the regular annual programme of the Fund.

The link with universities in North Carolina is proving especially productive. A fourth group of American students of medicine and health care administration came to study British health services. For the exchange tour, the British group this time included nurses. The Fund is also supporting a short-term attachment scheme for British family doctors, arranged jointly by the Council of Postgraduate Medical Education and the department of family medicine of the University of North Carolina.

The first King's Fund Medical Travelling Fellowships were awarded under a new scheme which enables British doctors of consultant status to visit Australia and New Zealand. The Fellows are selected from the nominations of a specially appointed advisory committee in Australia and the Postgraduate Medical Federation in New Zealand. The scheme is to operate experimentally for three years.

By special arrangement Australian hospital administrators take part, from time to time, in management courses at the King's Fund College. Travel arrangements are funded by the responsible State governments in Australia whilst the College provides free tuition and hospitality. At the same time, the College and its course members benefit from the visitors' contributions to discussions and group work during the courses.

A reverse scheme is being developed experimentally to provide opportunity for young British administrators to widen their professional experience through attachment to selected centres of hospital and health care practice in Australia. A community physician in training, the first to be appointed under this arrangement, will spend three months on an administrative research project at the new teaching hospital centre of Monash University, Victoria.

A group of senior nurses from Canada, USA and UK met at the joint invitation of the Fund and the Royal College of Nursing to study how nursing is changing to meet new health needs

in the three countries. The seminar was held in the King's Fund College, preceded by a week's orientation to the British health care system for the North American members. The interest aroused by the visit will be continued, it is hoped, by setting up study groups in each country with a view to holding another seminar in 1974.

HOSPITAL VISITS

A traditional activity of the Fund is its practice of visiting hospitals in the London area. Originally, the purpose was to learn something of the working standards of individual hospitals which could be taken into account in the annual distribution of grants. The introduction of the National Health Service effectively changed the role of the Fund in this respect. In consequence, the Management Committee has from time to time considered whether it is appropriate to maintain arrangements for hospital visiting. Experience has, however, suggested that the system has a continuing value. The purpose of the visits has, of course, changed. Nowadays, they provide means by which the Management Committee is able to keep in direct touch with the hospitals of the metropolitan area and to learn at first hand of their varied problems and needs. For their part, the hospital authorities have responded with the greatest friendliness and courtesy to the Fund's continuance of a time-honoured function. If, now, the visits are more informal, they are no less informative, and the Fund is grateful both to the hospitals for their goodwill and to the Visitors who so generously give their time and experience to

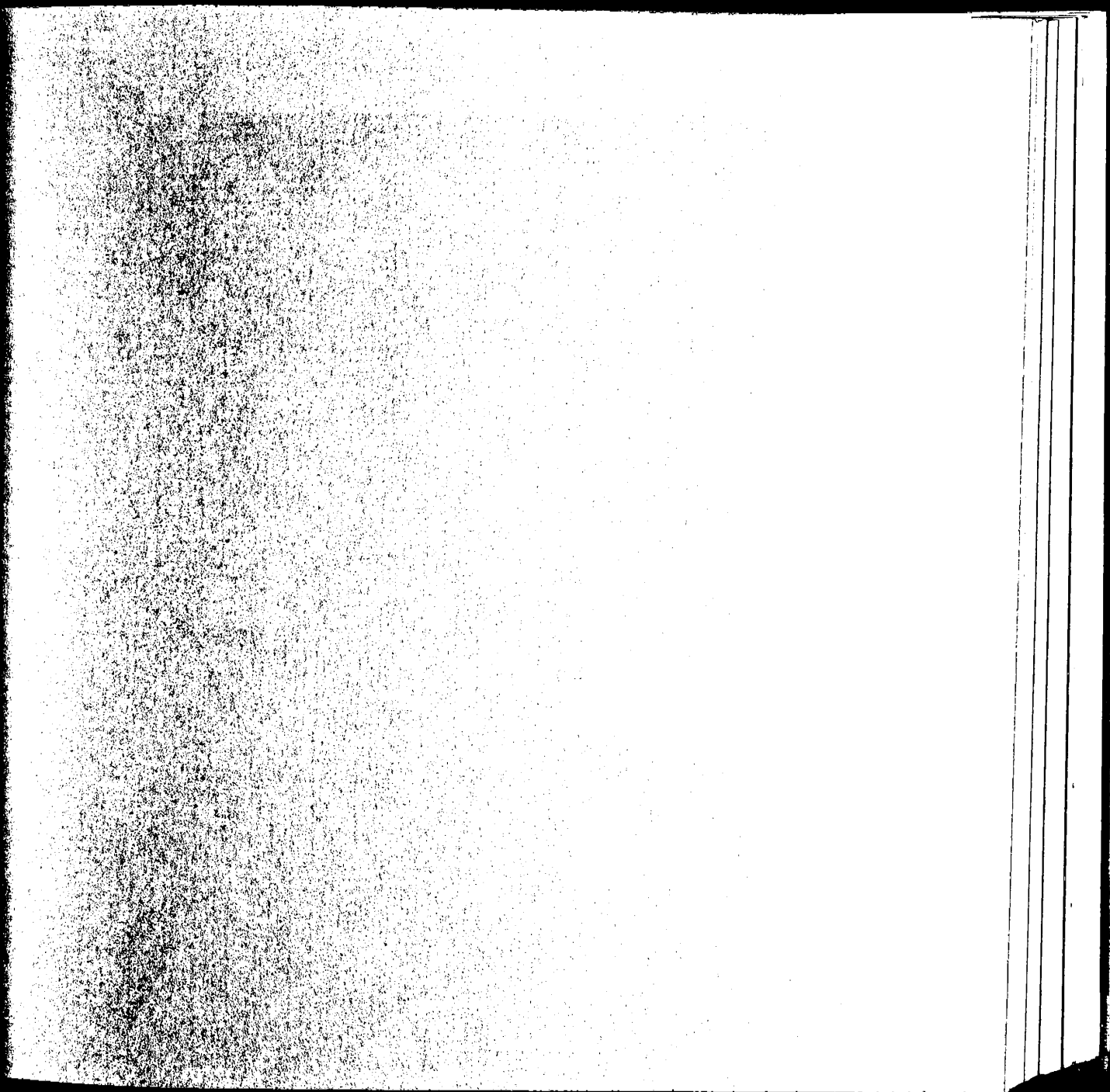
this still important aspect of the Fund's work.

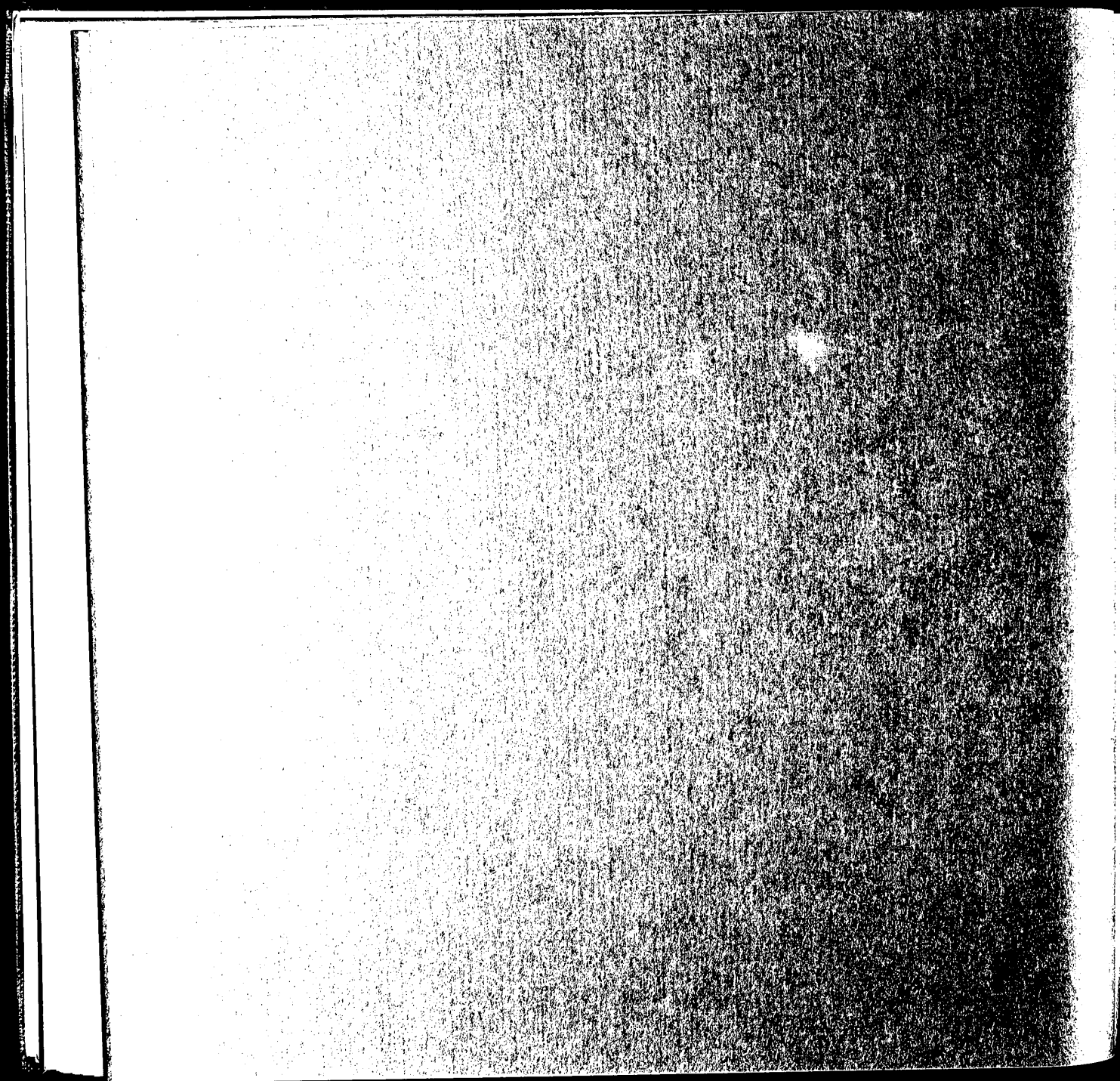
TRENDS IN GRANT-GIVING

Though much of the work of the two committees giving direct grants concerns itself with necessary improvements to hospitals and nursing homes, some new areas of special interest have developed. Among grants listed in the following pages are those given for projects which enable people to leave hospital and settle in the community more quickly, or to be spared altogether the necessity for admission to hospital. Some of the larger grants have been given to help establish centres for the treatment and rehabilitation of drug addicts, assessment of social deviants, and training schemes for the mentally handicapped and other disabled people. Projects of this kind go some way towards enabling groups working in specialist areas to experiment in providing integrated health care at local level.

CONTINUITY

Changes in the Fund's organisation and work result from the steady pursuit of basic policy. The problems which today face those who plan and provide health care are vastly different from those which existed when the Fund was first established; different, too, are the ways by which the Fund can help. But its purpose, to be an independent source of practical service, has been constant for 75 years. In the midst of a period full of challenge for everyone involved in health care, that purpose remains unchanged.





FINANCE

The following pages contain abridged financial statements extracted from the full audited accounts of the King's Fund, which are available on request. The statements show that at 31 December 1972, the total value of the Fund's assets (which is, of course, subject to market fluctuation) was more than £18 million, and the income for the year over £785 000.

Nevertheless, in the face of rising costs the King's Fund will always welcome new sources of money to enable it to continue and develop the part which it plays in the growth and change of hospital practice.

The Treasurer gratefully acknowledges all contributions that have been made to the Fund, and will be glad to receive any donations, large or small. In particular, he would suggest that the Fund is a most suitable object for charitable legacies. Forms for use in connection with legacies, annual subscriptions and donations will be found at the back of this report.

Bankers:	The Bank of England Baring Brothers and Co Limited Midland Bank Limited
Solicitors:	E F Turner and Sons
Auditors:	Deloitte and Co

KING EDWARD'S HOSPITAL FUND FOR LONDON
ABRIDGED STATEMENT OF ASSETS AND LIABILITIES AT 31 DECEMBER 1972

Valuation 31 December		Book Value 31 December	
1971	1972	1972	1971
£	£	£	£
		Capital Fund	
		Investments	
6 982 900	8 145 338	3 499 285	3 130 844
94 426	120 943	124 009	90 576
<u>7 077 326</u>	<u>8 266 281</u>	<u>3 623 294</u>	<u>3 221 420</u>
141 016	181 717	181 717	141 016
<u>7 218 342</u>	<u>8 447 998</u>	<u>3 805 011</u>	<u>3 362 436</u>
		Current assets	
		General Fund	
		Investments	
5 012 214	6 281 126	3 132 191	2 795 673
67 881	73 287	85 425	85 425
4 051 171	4 068 105	2 636 954	2 617 488
1	1	1	1
<u>9 131 267</u>	<u>10 422 519</u>	<u>5 854 571</u>	<u>5 498 587</u>
(140 933)	(254 631)	(254 631)	(140 933)
<u>8 990 334</u>	<u>10 167 888</u>	<u>5 599 940</u>	<u>5 357 654</u>
		Net current liabilities	
		Special Funds	
		Investments	
59 331	51 892	59 567	59 567
7 034	8 726	8 726	7 034
<u>66 365</u>	<u>60 618</u>	<u>68 293</u>	<u>66 601</u>
<u>£16 275 041</u>	<u>18 676 504</u>	<u>£9 473 244</u>	<u>£8 786 691</u>
		Total Net Assets	

ABRIDGED INCOME AND EXPENDITURE ACCOUNT
YEAR ENDED 31 DECEMBER 1972

	1972		1971	
Income	£	£	£	£
Securities and investments	549 039		532 626	
Land	226 571	775 610	199 103	731 729
Subscriptions and donations	7 434		7 336	
Legacies allocated to income	3 010	10 444	9 505	16 841
		786 054		748 570
Transfer from General Reserves to meet capital expenditure on premises occupied by the Fund		460 000		—
		£1 246 054		£748 570
Expenditure				
Grants allocated		360 641		325 783
King's Fund Centre	192 880		177 518	
Less contribution from DHSS	50 000	142 880	43 750	133 768
King's Fund College	203 479		206 942	
Less course fees received	67 313	136 166	69 527	137 415
Emergency Bed Service	99 760		94 254	
Less contribution from Metropolitan RHBs	93 260	6 500	87 754	6 500
Publications	28 471		27 771	
Less sales	15 939	12 532	5 589	22 182
Administration				
Salaries and pensions	80 517		66 208	
Establishment and office	20 941	101 458	16 988	83 196
Other Expenses				
Maintenance of Fund premises	9 395		15 507	
Professional fees, etc	14 151	23 546	8 005	23 512
Special contribution to Pension Fund		783 723		732 356
		—		13 039
		783 723		745 395
Capital expenditure on Fund premises				
King's Fund College	148 982			
King's Fund Centre	267 714			
Head Office	46 347			
	463 043			
Less compensation for loss of light	7 250	455 793		—
Excess of Income over expenditure for the year, transferred to General Fund		1 239 516		745 395
		6 538		3 175
		£1 246 054		£748 570

**SUMMARY OF SPECIAL FUNDS
AT 31 DECEMBER 1972**

Special Anonymous Trust (Miller General Hospital)	£ 19 068
Mrs L L Layborn, deceased, Trust (Ward for Reduced Gentlefolk)	4 162
J R Catlin, deceased, Trust (Endowment of a hospital bed)	46
Mrs C H E Cooper, deceased, Trust (Homes for Aged Sick)	607
A Brooke-Smith, deceased, Trust (Emergency Bed Service)	1 035
Miss A A Sampson, deceased, Trust (Independent Hospitals)	9
N H Vernon, deceased, Trust (Diabetes Research)	40 109
N H Vernon, deceased, Trust (Ear, Nose and Throat Research)	3 257
	£68 293

LEGACIES RECEIVED IN 1972

Capital:

William Eichholz	£ 23 128
Isaac Horton	60
Miss Elise Darling Helena Hosack	1 686
Mrs Ada Frances Jennings	554
John Leighton	14
Francis Charles Tandy Mortimer	1 500
Miss Matilda Charlotte Osborne	1 735
Percival Lloyd Williams	14 548
	£43 225

Allocated to Income:

John George White	£ 1 570
Henry Woolf	1 440
	£3 010

CONTRIBUTORS 1972

Her Majesty The Queen
Her Majesty Queen Elizabeth The Queen Mother
HRH The Duke of Gloucester

Anonymous
Anonymous ('E M E')

Bank of England
Barclays Bank Ltd
Baring Foundation Ltd
Bawden Fund
Miss A G Blaikie
G A Boston

A H Chester
Lord Cohen of Walmer PC KC
Courage, Barclay & Simonds Ltd
Coutts & Co

Miss V Dodson

Miss W Edwards

Gillett Bros Discount Co Ltd
Neville M Goodman CB MA MD PhD FRCP DPH
Guardian Royal Exchange Assurance Group

Lord Hayter
Cardinal Heenan
Miss I E Hoskins
Miss E V Howells

Mrs G Inchbald
Innes Memorial Fund

Jensen & Son

Reverend E S C Lennard
Lloyds Bank Ltd
London & Northern Estates Co Ltd

Maitland Trust
Marks & Spencer Ltd
Matheson & Co Ltd
Metropolitan Bonded Warehouses Ltd
Midland Bank Ltd

Morgan Grenfell & Co Ltd
John Mowlem & Co Ltd
Lord Moyne

National Westminster Bank Ltd

Major R O'Brien MVO TD

Worshipful Company of Pewterers
Prudential Assurance Co Ltd

H J Rae Charity
Albert Reckitt Charitable Trust
T B Robson
N M Rothschild & Sons

Schwartz Buchanan & Co
O N Senior

Ernest Taylor CBE

Sir Harold Wernher Bt GCVO TD
Whitbread & Co Ltd
L S White
Williams & Glyn's Bank Ltd
Judge R B Willis TD

GRANTS MADE IN 1972

TO HOSPITAL AUTHORITIES IN NATIONAL HEALTH SERVICE

Banstead HMC:
Banstead Hospital
repairs to tennis courts

£

500

Barnet Group HMC:
furnishings for Barnet Postgraduate Medical
Centre
towards costs of occupational health service

4 500

1 400

Bromley Group HMC:
Lennard Hospital
study of five-day rehabilitation ward for
geriatric patients

2 000

Central Middlesex Group HMC:
Acton Hospital
recreation room for patients

2 500

**Croydon and Warlingham Park Group
HMC:**
Queen's Hospital
group rehabilitation unit

3 000

Dartford and Darenth HMC:
Darenth Park Hospital
pets' corner

5 000

Enfield Group HMC:
film showing work of staff

250

Harefield and Northwood HMC:
Harefield Hospital
pavilion and shop
Mount Vernon Hospital
gymnasium for department of physical
medicine

7 000

6 500

Hendon Group HMC:
Edgware General Hospital
staff social centre
improvements to children's ward

8 000

6 000

Ilford and District HMC:
Chadwell Heath Hospital
changing and rest rooms for non-resident
staff

7 000

Dagenham Hospital
social centre for patients, visitors and staff

1 450

18

King's College Hospital:
appointment of librarian for nurse training
school

£

1 500

Manor HMC:
Manor Hospital
extension of staff clubhouse

6 000

Mid Herts Group HMC:
Hill End Hospital
community services centre to house
domiciliary staff

3 000

National Heart and Chest Hospitals:

London Chest Hospital
landscaping grounds

500

National Heart Hospital
ambulance for sitting patients

3 100

Romford Group HMC:
Rush Green Hospital
centralising staff dining rooms

4 000

Royal Earlswood Group HMC:
Royal Earlswood Hospital
patients' social centre

7 000

Royal Free Hospital:
common room for resident medical staff

6 000

Royal Marsden Hospital:
covering for swimming pool

4 000

St Charles' Group HMC:
Marlborough Day Hospital
recreation room for patients

3 000

St Thomas' Hospital:
experimental administrative appointment to
provide formal link between research and
management

9 000

South West Metropolitan RHB:
appointment of regional organiser of
voluntary services

3 000

Tottenham HMC:
The Prince of Wales's General Hospital
improvements to children's department
including overnight room for parents

3 500

University College Hospital:
staff recreation centre

5 000

Wessex RHB:
towards cost of professional visit to Australia

250

experimental appointment of information officer in health planning unit	£ 1 000
Westminster Hospital Group: Queen Mary's Hospital	
accommodation for coordinator of voluntary services	1 500
Westminster Hospital	
redevelopment of main entrance hall	1 000
	<hr/> £117 450

TO INDEPENDENT HOMES AND HOSPITALS

Alexander Residential Club, SW5	
improvements to kitchen and dining rooms	288
Athol House, Dulwich	
fire precautions	3 500
British Home and Hospital for Incurables, Streatham	
emergency generator	2 000
Crabhill House, near Redhill	
modern coach-style ambulance with mechanical tail lift	3 000
various improvements to building	2 500
Denville Hall, Northwood	
towards rebuilding	3 000
Derwent House, Chislehurst	
fire precautions and improvements to central heating	2 500
Dominican Convalescent Home, Kelvedon	
fire precautions and redecorations	750
Dresden House, Hove	
rewiring sick bay	500
Foxholm, Bognor Regis	
improvements to fire precautions and central heating	2 000
Hamilton Lodge, Great Bromley	
fire precautions	250
Hertfordshire Seaside Convalescent Home, St Leonards-on-Sea	
improvements to reception area	1 350
Homefield, Bickley	
central heating system	2 500

Home of Compassion of Jesus, Thames Ditton	£
various improvements	2 000
Limpsfield Convalescent Home for Women	
interior redecorations	800
London and Ascot Priory, Ascot	
improvements to kitchen and bathrooms	340
Lulworth Court, Westcliff-on-Sea	
fire precautions and replanning of kitchen	3 000
Lyle Park, SW15	
improvements to kitchen	1 000
Marillac Hospital, Brentwood	
day room	4 900
Maureen's Oast House for Arthritics, Lamberhurst	
tail lift for mini-bus	350
Moor House School, Oxted	
equipment for new premises	2 000
Roseland, Banstead	
renewing boiler and associated equipment	1 000
St Teresa's Hospital, Wimbledon	
improvements to clinic rooms	750
Samuel Lewis Seaside Convalescent Home, Walton-on-Naze	
providing second lift	1 500
Thomas Banting Memorial Home, Worthing	
fire precautions	800
White House Convalescent Home, Bexhill-on-Sea	
repairs to roof	750
Yarburgh Children's Home, East Grinstead	
furnishings for extension	950
Expenses of Convalescent Homes Conference, and of visits by ward sisters and medical social workers to convalescent homes	563
Token grants to hospitals and convalescent homes	1 943
	<hr/> £46 784

	£		£
TO LOCAL AUTHORITIES AND ORGANISATIONS		London Borough of Hackney	
Association of Independent Hospitals and Kindred Organisations		geriatric dental service	700
towards running costs	500	London Borough of Waltham Forest	
British Red Cross Society, County of London Branch		voluntary work centre	700
equipment for training department	1 763	National Association of Industrial Therapy Managers	
Central Middlesex Industrial Health Service		to assist new organisation	1 000
towards first year running costs	570	National Association for Mental Health	
Centre on Environment for the Handicapped		appointment of liaison officer to encourage university students in services for the mentally ill and mentally handicapped	2 000
running costs	1 500	film	500
Chartered Society of Physiotherapy		National Association of Voluntary Help Organisers	
recruitment film	500	towards running costs	850
Community Innovations Register		Nottingham Council of Social Service	
towards running costs	5 000	experimental appointment of personnel/ liaison officer	1 200
Community Service Volunteers		Oxford Centre for Management Studies	
to extend work in hospitals	2 000	seminars on the management of change	6 900
Diamond Riding Group for Handicapped Children		Paintings in Hospitals	7 000
riding centre	1 000	PAR House Ltd	
Disabled Living Foundation		hostel for rehabilitation of former drug addicts	4 000
preparation of book on problems of clothing and dressing handicapped people	1 000	Perseverance Trust	
Elderly Invalids Fund		fitting out kitchens in block of flatlets	875
towards running costs	4 000	Postgraduate Medical Federation	
Enfield Society for Mentally Handicapped Children		appointment of peripatetic librarian to coordinate library activities in medical centres	2 000
short-stay hostel	2 000	Queen Elizabeth's Foundation for the Disabled	
Institute of Hospital Engineering		assessment centre for handicapped school leavers	10 000
to establish international federation	570	ROMA Housing Association Ltd	
Institute of Mental Subnormality		furnishing hostel for drug addicts	2 000
scheme for training staff in methods of behaviour modification	17 500	Royal College of General Practitioners	
International Federation of Medical Records Organisations		course on practice administration	700
professional visit to Australia	250	Royal Society of Arts	
London Borough of Croydon		industrial design bursaries competition	250
outdoor activities for the handicapped	800	Searchlight Workshops, Newhaven	
		new ward block	2 000

Seventies Mental Health Appeal	£ 500	Drug dependency discussion group	£ 150
Shirley Institute		Evaluation of health centres	2 000
investigation into problems of clothing handicapped and disabled people	6 600	Exhibitions	
Society of Medical Officers of Health and National Institute for Social Work Training		New Rooms for Old (furnishings and room settings for mentally handicapped)	850
survey of cooperation between health and social service departments	1 000	The Elderly Mind (psychogeriatric services)	1 600
Surrey Community Development Trust Ltd		Voluntary help (preparation)	2 486
centre for assessment of social deviants	10 000	Health service planning research	4 000
The 1930 Fund (for the benefit of trained district nurses)		High pressure steamer	585
new office expenses	50	Inservice training for staff in hospitals for mentally handicapped	2 500
Thoracic Society		Integration of health services	6 500
professional visit from New Zealand	500	King's Fund travelling fellowships	5 000
Toy Libraries Association		Language barrier	445
towards development	1 500	Library and information services	2 600
University of Southampton		Management research projects	3 600
department of sociology		Medical records conference	300
study of role of social workers in psychiatric hospitals	3 583	Mental handicap services projects	13 005
Volunteer Centre		National hospital house journals	300
towards establishment	10 000	NHS and EEC seminars (preparation)	1 000
Young Volunteer Force Foundation		Nurse/patient dependency	250
to develop service to elderly patients at home	6 300	Overseas travel	2 500
	£121 661	Patients' satisfaction studies	900
		Reading project	4 000
FOR EXPERIMENT, ENQUIRY, EDUCATION, EXHIBITIONS		Report writer retainer fee	150
Admission of patients to hospital	£ 750	Round the corner stairs lift	1 500
Art for the elderly	1 250	Schools of Nursing Directory	1 000
Attitudes to patient care	700	Terminal care and relief of pain	750
Brunel University/King's Fund joint appointment	2 000	Voluntary service information office	5 100
Coordination of services for mentally handicapped	6 975		£74 746
		Total of grants made in 1972	£360 641

EXPERIMENTS, ENQUIRIES AND EDUCATIONAL PROJECTS

NEW

Accounting for health*

King's Fund working party on application of economic principles to health service management

(GAP)

Client response to social work

study in a psychiatric hospital

(MCH)

Drug dependency

appointment of personnel/liaison officer to work with local drug dependency and community committees

(MCH)

Evaluation of health centres

enquiry into need for evaluating health centres and group practices

(BB)

Inservice training for staff in hospitals for the mentally handicapped

to encourage cooperation between NHS and voluntary personnel in devising training schemes

(JRE)

High pressure steamer

test of use in hospital

(MCH)

Language barrier

experimental courses in teaching English to overseas ancillary staff, and for training supervisors

(MDH)

Nurse/patient dependency

working group to study methods of measurement of dependency

(MDH)

Social planning group

to study planning of health, social and other public services

(FRR)

Volunteers and social workers

study of relationships

(MDH)

CONTINUING OR COMPLETED

Admission of patients to hospital*

study of procedures and problems

(IR)

Art for the elderly

to introduce art classes to geriatric patients and institute a training school for teachers

(MDH)

Attitudes to patient care*

meetings for nurses

(JBC)

British Health Centres Directory*

compilation and publication

(BB)

Brunel University/King's Fund studentship scheme

to support students taking master's degree in health service administration

(FRR)

Communication for senior executives*

training for interviews on radio and television

(MDH)

Coordination of services for the mentally handicapped*

to examine hospital and community services

(JBC)

Disposal of human waste

to improve design of commodes and similar equipment

(IR)

District general hospital working party

to study organisation and management

(FRR)

Health service planning research*

to assess research priorities and develop information services

(BB)

Hospital head porters' training scheme

employment of training officer

(IR)

Hospital pathology laboratories*

examination of organisation and work

(IR)

Integration of health services*

to support study in collaboration with South East Metropolitan RHB

(MCH)

Job satisfaction

study in The London Hospital

(MCH)

Joint Board of Clinical Nursing Studies

to support scheme for control of post-registration clinical courses

(MCH)

King's Fund travelling fellowships

bursaries for medical consultants for visits and professional attachments in Australia and New Zealand

(GAP)

Kitchen plans and utensil cleaning*

experiment to provide higher standard of hygiene and reduce labour costs

(MCH)

Library and information services development at the King's Fund Centre	(KM)	Schools of Nursing Directory preparing second edition	(KM)
Management research projects individual training projects for student administrators	(FRR)	Shop Window meetings for telephonists, receptionists and porters	(MDH)
Medical services organisation and planning to support study and training at St Thomas's Hospital Medical School	(GAP)	Terminal care and relief of pain to support study of organisation and operation of a unit in collaboration with Oxford RHB	(MCH)
Medication systems* to try out recommendations of earlier study and extend study to psychiatric hospitals	(MCH)	Training aids* to develop aids on correct techniques for lifting patients	(JBC)
Mental handicap services projects to develop ways of improving services	(JRE)	Tutor secondment to establish day release courses for nurse teachers at University of Surrey in collaboration with General Nursing Council	(FRR)
National hospitals house journals competition and readership surveys	(MDH)	Voluntary help in health and social services developing work of the Voluntary Service Information Office	(DMJ)
Patients' satisfaction studies studies of patients' attitudes in psychiatric hospitals and units	(IR)		
Reading project development of information system in health and social services in Reading and district	(FRR)		

Note: Initials in brackets are those of the staff member who can give detailed information on the project concerned. See Staff Directory page 31 for name and address.

*completed

**KING'S FUND CENTRE CONFERENCES,
MEETINGS AND EXHIBITIONS**
LARGE CONFERENCES

Catering

Automatic catering in hospitals
Feeding the mentally handicapped
Workload and labour costs

Comprehensive health planning

Seven seminars on different aspects of
comprehensive health planning

Geriatrics

Planning services for the elderly
Priorities for psychogeriatric care
The organisation of psychogeriatric care

Management topics

Assessing geriatric needs
Health information services and the medical record
Home from hospital
Job descriptions for hospital staff
Planning and allocation of resources in an
integrated health service
Resources for maintenance

Mental handicap

Community acceptance
Helping parents to teach children
Occupations and diversions
Towards a professional organisation for mental
handicap
Toys for the mentally handicapped

Nursing

Attitudes and assessment
Continuity of care — nurses and volunteers
Inservice training
Nurse/patient dependency
Salmon structure

Voluntary services

Development of voluntary resources
Quakers and work camps
School, hospital and community

Other topics

Art for the elderly
California's mental health system
Community hospital
Community hospitals — Oxford
Drug dependency
Health care in the USA
Hospital house journals
Language barrier
Lifting and carrying patients (demonstration)
Patients' clothing
Patients' satisfaction study in psychiatric hospitals
Problems of alcoholism and work

SMALL MEETINGS

Attitudes study group
Care of the emotionally disturbed adolescent
Community health nurses' study days
Continuity of care — nurses and volunteers
Coordination of services for the mentally handicapped
Geriatric meetings
Hospital internal communications
Inservice training for nurses
Language barrier
Mental handicap: study days
Nurse allocation
Nurse/patient dependency study
Priorities for the caring professions
Psychogeriatrics: study days
RHB trainee catering officers: study days
Research within the Salmon nursing structure
Salmon structure and counselling
'Shop window' staff discussion groups
Television communication for the senior executive
The child in hospital
Training project officers in mental handicap
Voluntary help — planning and research
Voluntary help organisers: induction days
Voluntary help organisers: pre-course seminars

LUNCH TALKS

Dr Wilfrid Harding — The community physician
Mr R Huws Jones — Priorities in health care
Mr Alfred Morris — Next steps for the disabled
Miss S Quinn — Nurses, patients and management
Dr Grey Turner — Medicine and the EEC
Dame Albertine Winner — The care for dying patients and their families

EXHIBITIONS

Clothing for long-stay patients
New rooms for old (mental hospitals)
Seventy-five years of the King's Fund
The elderly mind
Toys for the mentally handicapped
Workload and labour costs (catering service)

KING'S FUND COLLEGE COURSES AND SEMINARS

'Cogwheel' management seminars
Health service organisation in Britain (for American students)
Management appreciation for senior medical staff
Management development
Management of integrated health care
National administrative training course
Regional trainee catering officers

Special courses and seminars

Directors of social service seminars
Management in geriatric hospitals
Management of change (at Oxford Centre for Management Studies)
Organisation and delivery of health care in USA (for British medical and administrative staff: in association with Duke University and University of North Carolina)
Overseas administrators (in association with the Polytechnic of the South Bank)
Overseas course (in association with the King's Fund Centre)

Note: Both the Centre and the College give hospitality to other organisations and groups for conferences and seminars.

GENERAL COUNCIL AND COMMITTEES

GENERAL COUNCIL

Governors:

HRH Princess Alexandra, The Hon Mrs Angus Ogilvy GCVO
Lord Ashburton KG KCVO JP
Lord Cottesloe GBE TD

The Lord Chancellor
The Speaker of the House of Commons
The Bishop of London
Cardinal Heenan
The Reverend G A D Mann HCF
The Chief Rabbi
The Lord Mayor
The Chairman of the Greater London Council
The Governor of the Bank of England
The President of the Royal College of Physicians
The President of the Royal College of Surgeons
The President of the Royal College of Obstetricians and Gynaecologists
The President of the Royal College of General Practitioners
The President of the Royal College of Nursing
The President of the Institute of Health Service Administrators
The Chairman of each of the four Metropolitan Regional Hospital Boards
Professor Brian Abel-Smith MA PhD
G F Abercrombie VRD MD
Lord Ashburton KG KCVO JP
H C Belk MA LLB
R E Brook CMG OBE
Lady Brooke of Cumnor DBE
A H Carnwath
Lady Clitheroe
P H Constable OBE
C A Cooke OBE LLD JP
Lord Cottesloe GBE TD
J O F Davies CBE MD FRCP DPH
Miss M M Edwards MVO
Peter F Evans
H Farmar
Arthur Franks OBE
Sir George Godber GCB DM FRCP DPH
Lady Hamilton OBE MA
Brigadier Sir Geoffrey Hardy-Roberts KCVO CB CBE

Michael Hargreave VRD
D G Harington Hawes
S C Harris OBE JP
Lord Hayter
G P E Howard
Lord Inman PC JP
G J A Jamieson
Sir Francis Avery Jones CBE MD FRCP
Professor Alan Kekwick MB FRCP
C E Kevill-Davies CBE JP
Captain A Lade OBE RN
Edgar Lawley CBE
Lord Luke TD DL JP
W G MacKenzie VMH
C J Malim CBE
Sir Rennie Maudslay KCVO MBE
R A Mickelwright OBE FHA
Sir Frederick Minter GCVO JP
George Mitchell CBE JP
A H Montgomery OBE
H R Moore CBE
Lord Moran MC MD FRCP
Hon Mrs John Mulholland DCVO
Marquis of Normanby MBE
Major R O'Brien MVO TD
H M O'Connor OBE TD
Commander R W Peers RN
Sir Michael Perrin CBE
Dame Muriel Powell DBE
J F Prideaux OBE
Sir Max Rayne
Miss A B Read MBE
Sir John Richardson Bt MVO MD FRCP
Sir Kenneth Robson CBE MD FRCP
Lanning Roper
Sir James Paterson Ross Bt KCVO MS FRCS LLD
Miss M J Roxburgh OBE
Hon Peter Samuel MC TD
The Baroness Serota
George Somerville MD DPM
Ernest Taylor CBE
Professor Sir Ronald Tunbridge OBE MD FRCP JP
Lord Wardington
Major Simon Whitbread JP
E T Williams CB CBE DSO
Sir Hugh Wontner CVO

MANAGEMENT COMMITTEE**Lord Hayter Chairman**

H C Belk MA LLB
R E Brook CMG OBE
A H Carnwath
J O F Davies CBE MD FRCP DPH
Sir George Godber GCB DM FRCP DPH
Michael Hargreave VRD
Sir Francis Avery Jones CBE MD FRCP
Dame Muriel Powell DBE
Sir Kenneth Robson CBE MD FRCP
The Baroness Serota

Editorial Panel**A H Carnwath Chairman**

J O F Davies CBE MD FRCP DPH
Sir Francis Avery Jones CBE MD FRCP
Professor W W Holland MD BSc

FINANCE COMMITTEE**A H Carnwath Chairman**

The Governor of the Bank of England
E O Faulkner MBE
Viscount Harcourt KCMG OBE
G J A Jamieson
Sir Max Rayne
Lord Wardington

ESTATES COMMITTEE**A H Carnwath Chairman**

C A Cooke OBE LLD JP
G J A Jamieson
Sir Max Rayne

AUXILIARY HOSPITALS COMMITTEE**H C Belk MA LLB Chairman**

Peter F Evans
A N Exton-Smith MD FRCP
P E Thompson Hancock FRCP
Richard Hough
Mrs Geoffrey Inchbald
Lieutenant-Colonel James Innes JP
R J Kirton CBE
Barbara Morton OBE MB BS
Miss B N Perry AIMSW
Miss G I Robson AIMSW
Miss U B Webb OBE AIMSW
D E Yarrow MB MCh DCH

EDUCATION COMMITTEE**The Baroness Serota Chairman**

W G Cannon MA FHA
Miss J I Jones SRN SCM QNS HV Tutors Cert
Captain A Lade OBE RN
W J McQuillan MB BCh LM DPH DCH
C I Rutherford
Professor J H Smith
Miss A M W White CBE SRN RFN SCM

Adviser on Hospital Law

S R Speller OBE LLB PhD

EMERGENCY BED SERVICE COMMITTEE**Sir George Godber GCB DM FRCP DPH
Chairman**

A H Burfoot BA FHA
D B Caro MB ChB FRCS
C H Langley FHA
D C Morrell MRCP MRCS MRCGP
J S Norell MB BS MRCS LRCP
K R D Porter MBE FRCP MRCS LDSRCS DPH
R H Sandford Smith

HOSPITAL GRANTS COMMITTEE**Michael Hargreave VRD Chairman**

J J Bradley MB FRCP MRCPsych DPM

F M Cumberlege

Mrs A W Franklin

H K Goadby MD

Miss R M Jones SRN RSCN SCM

R C Millward FHA FCCS

J K Morrison MB BCh BAO FRCOG

Hon Mrs John Mulholland DCVO

Commander R W Peers RN

D Somerville CB

A R Worters MB BS DPM

Garden Advisers

W G MacKenzie VMH

J Newell

Lanning Roper

Dietetic Adviser

Miss B R Stanton SRD

KING'S FUND CENTRE COMMITTEE**Sir Francis Avery Jones CBE MD FRCP****Chairman**

Miss J F Carré

J Fry MD FRCS LRCP FRCGP

T J B Geffen MD MRCP

N M Hale

W G Harding FRCP FFCM DPH

R Huws Jones CBE

L C Phipps OBE DPA FHA

K R Porter MBE FRCP MRCS LDSRCS DPH

Miss Rosemary Stewart

Miss J M Wheeler

RESEARCH COMMITTEE**Sir George Godber GCB DM FRCP DPH****Chairman**

Professor Brian Abel-Smith MA PhD

H Baderman BSc MRCP

Miss C Biddulph SRN SCM BTA RNT

J L T Birley BM MRCP DPM

Miss Oriole Goldsmith

J I H Hadfield BCh FRCS

Sir Francis Avery Jones CBE MD FRCP

R L Lindon MRCS LRCP DPH DCH

Professor Ian McColl MS FRCS

D C Morrell MRCP MRCS MRCGP

W E Randall DFC AFC FCII

Miss Rosemary Stewart

P Westland

HOSPITAL VISITORS

G F Abercrombie VRD MD
Professor W J H Butterfield OBE MD FRCP
F S Cooksey CBE MD FRCP
O P Dinnick MB FFARCS
C W Flemming CBE DM MCh FRCS
P E Thompson Hancock FRCP
R S Handley OBE MB FRCS
Howard G Hanley MD FRCS
J B Harman MD FRCP FRCS
Kenneth Harris MD FRCP
P J Helliwell MB FFARCS
M I A Hunter MD FRCP
Professor Alan Kekwick MB FRCP
W N Mann MD FRCP
Sir Ralph Marnham KCVO MChir FRCS
S P Meadows MD FRCP
R W Nevin TD MB FRCS
Sir John Richardson Bt MVO MD FRCP
Sir Kenneth Robson CBE MD FRCP
Sir James Paterson Ross Bt KCVO MS FRCS LLD
Sir Herbert Seddon CMG DM FRCS FACS
A H M Siddons MChir FRCS
J F Stokes MD FRCP
Norman Tanner MD FRCS FACS
Selwyn Taylor DM MCh FRCS
E G Tuckwell MCh FRCS
Brian Warren MRCS LRCP

Professor Brian Abel-Smith MA PhD
Lady Brain
Lady Brooke of Cumnor DBE
Lady Clitheroe
Lady Compton
F M Cumberlege
J A M Ellison-Macartney CBE TD
Arthur Franks OBE
Lady Hamilton OBE MA
Sir Patrick Hamilton Bt MA
K Miller Jones
R J Kirton CBE
Captain A Lade OBE RN
H J Lester OBE FCA JP
Lady Llewelyn-Davies
C J Malim CBE
The Dowager Viscountess Monckton of
Brenchley CBE

H R Moore CBE
Hon Mrs John Mulholland DCVO
Lord Northbrook
Major R O'Brien MVO TD
H M O'Connor OBE TD
Sir Michael Perrin CBE
Earl of Rothes
Sir Herbert Thompson CIE
Lieutenant-Colonel R P Tong OBE
Sir Reginald Wilson

STAFF DIRECTORY

KING'S FUND HEAD OFFICE 14 Palace Court W2 4HT Telephone: 01-727 0581

Secretary: G A Phalp CBE TD
Deputy Secretary: E D Halton
Assistant Secretary: Elizabeth Lucas

Accountant: B G Sweet
Assistant Accountant: Mrs K Gomez
Estates Administrator: Lieutenant-Colonel
J D Goodship
Grants Secretary: E D Halton
Press Officer: P M Lefevre
Publications Editor: Miss D M Caney

General Enquiries: Mrs P I Wynne-Ellis

KING'S FUND CENTRE 24 Nutford Place W1H 6AN Telephone: 01-262 2641

Director: M C Hardie MA FHA
Assistant Directors: B Brookes Dipl Arch RIBA
Miss J B Craig SRN RSCN
K Morton
I Roberts MA FHA
Administrative Officer: A F J Chidgey
Catering Officer: Miss E J R Kydd AMIMA
Conference Secretary: Mrs B H Osborne SRN
Designer-draughtsman: D G Ewbank
Equipment Adviser: S G Wakeling
Exhibition Officer: Mrs W M Arnett-Rayson SRN
RFN
Nursing Officer: Mrs H G Edwards SRN Dip Soc
Project Officer: Mrs J Rush SRN Dip Soc
Research Officer: Miss M D Hinks FHA

LIBRARY AND INFORMATION SERVICES
Head: Mrs J M Hurst ALA
Information Officer: R G Bennett
Librarian: Miss J M B Freeman

SPECIAL PROJECTS
Development of Services for the Mentally Handicapped
Associate Director of the Centre:
J R Elliott MBE FHA

Voluntary Service Information Office
Information Officer: Mrs D M Johnson BA

KING'S FUND COLLEGE
2 Palace Court W2 4HS
Telephone: 01-229 9361

Director of Education: Frank Reeves FCA FHA
Director of Studies: P J Torrie FIWSP
Associate Director: R T Whatley FHCIMA
22 Holland Park W11 3TD
01-727 0581

Tutors:

M W Cuming MA MIPM
Miss F M Dixon BA
Miss M D Hamilton BA AHA ABPsS
G F L Packwood BA MEd
A N Pearce BSc
E W C Seccombe BSc(Soc) FHA FMR FSS

Secretary of State Fellowships:

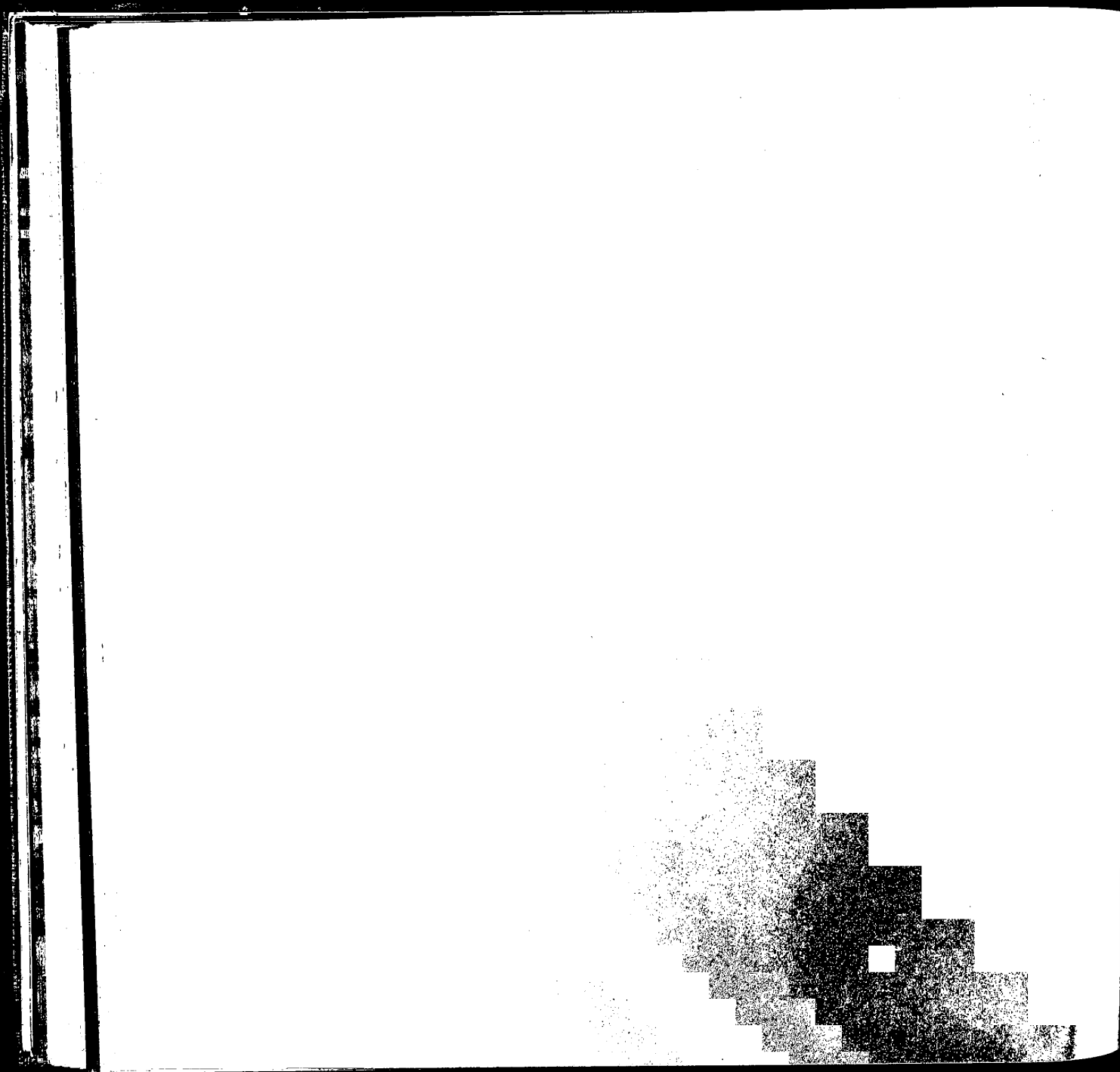
A Gatherer MD ChB DPH DIH
Dulcie Gooding MB BS DPH MFCM
A F Gray FCIS FHA
K G Walker MA FHA

Registrar: P V Lowe MC

KING'S FUND EMERGENCY BED SERVICE
Fielden House
London Bridge Street SE1 9SG
Telephone: 01-407 7181

Secretary: K S Morfey

**FORMS FOR USE IN CONNECTION WITH
LEGACY, ANNUAL SUBSCRIPTION OR
DONATION, BANKER'S ORDER AND
SEVEN-YEAR COVENANT**

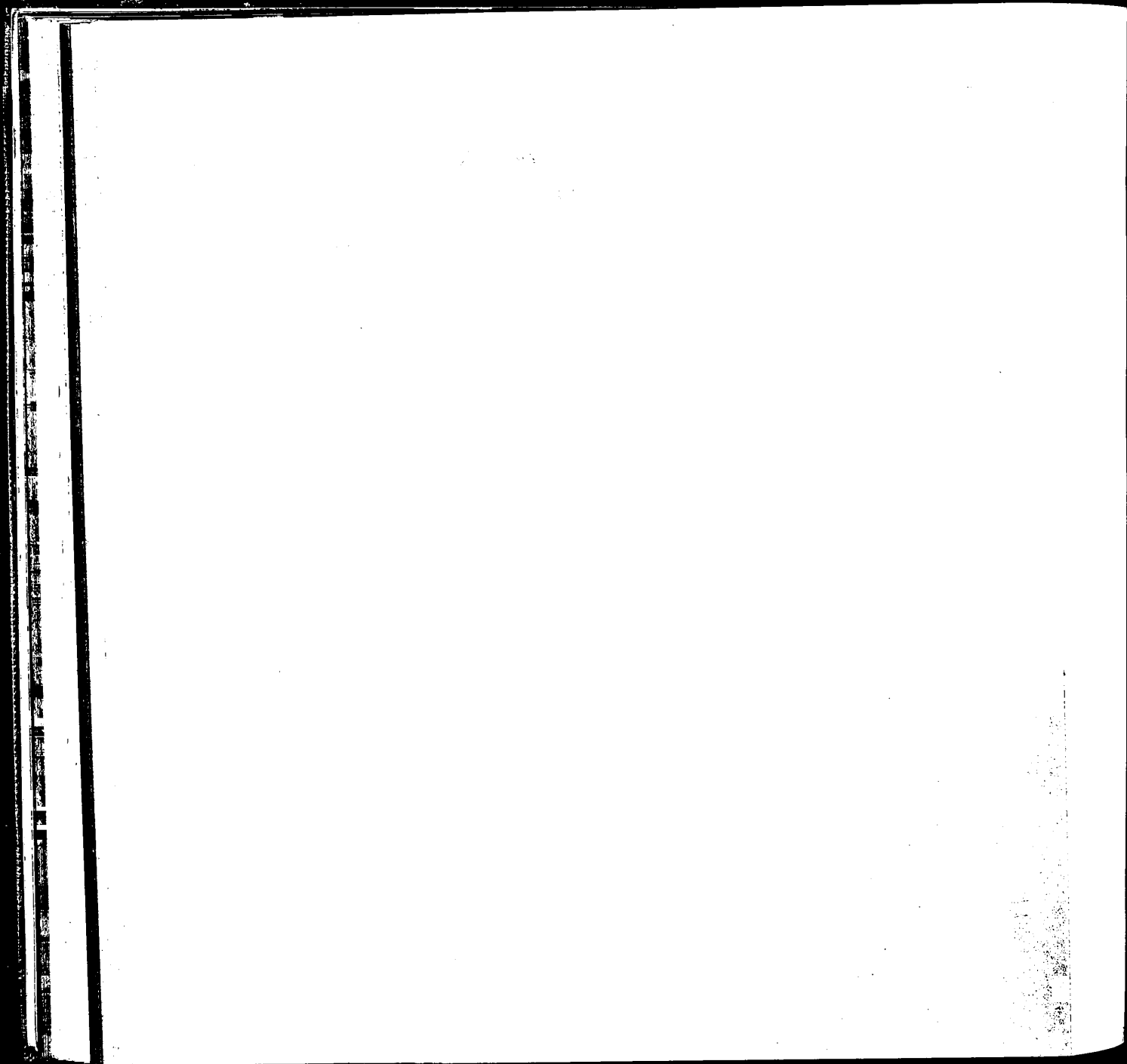


LEGACY

'I give free of duty to KING EDWARD'S HOSPITAL FUND FOR LONDON the sum of £_____ to be either expended in such manner or invested from time to time in such investments (whether authorised by the law for the time being in force for the investment of Trust Funds or not) or partly expended and partly invested as the Governors and General Council for the time being of the Fund shall in their absolute and uncontrolled discretion think fit. And I direct that the receipt of the Treasurer for the time being of the Fund shall be a good and sufficient discharge to my Executors.'

Residue

'I give all my property not otherwise disposed of by this my Will subject to and after payment of my funeral and testamentary expenses to KING EDWARD'S HOSPITAL FUND FOR LONDON, to be either expended, etc., etc. (as above).'



FORM FOR ANNUAL SUBSCRIPTION OR DONATION

Date _____ 19 _____

To the Secretary

KING EDWARD'S HOSPITAL FUND FOR LONDON
14 PALACE COURT LONDON W2 4HT

I enclose cheque for the sum of £ _____ as an

Annual Subscription/Donation to the Fund.

Kindly acknowledge receipt to the following address:

Name _____

Address _____

Cheques and Postal Orders should be made payable to 'KING
EDWARD'S HOSPITAL FUND FOR LONDON'.

1904

TO THE BOARD OF
DIRECTORS
OF THE

AMERICAN
SAVINGS
BANK
OF
NEW
YORK

EDWARD J. HENRY
PRESIDENT

STANDING ORDER FOR BANKERS

Date_____19____

To (Name of Bank_____and Branch)_____

Please pay on the_____day of_____19____

to the BANK OF ENGLAND LONDON EC2R 8AH for the credit of
KING EDWARD'S HOSPITAL FUND FOR LONDON, a/c No. 53600002,

the sum of_____

and continue to pay the same amount on the_____

in each future year until further notice.

Signature_____

£	p
---	---

Name_____
(for postal purposes)

Address_____

MEMORANDUM

TO : THE PRESIDENT

FROM : THE SECRETARY OF DEFENSE

SUBJECT: [Illegible]

1. [Illegible]

2. [Illegible]

3. [Illegible]

4. [Illegible]

1	2	3
4	5	6
7	8	9
10	11	12

INCOME TAX ON ANNUAL SUBSCRIPTIONS

Annual subscribers, by filling up the following form of agreement for seven years, enable the Fund to recover income tax on their subscriptions.

For example, if a contributor who now subscribes £30 per annum, enters into an agreement in the form below, filling in the figure £30, the result will be

(i) the subscriber sends a cheque for £30, with a certificate that he has paid income tax on the amount which, after deducting income tax, leaves £30 (i.e., with income tax at 30%, £42.86); the Fund can supply forms of certificate if desired;

(ii) the King's Fund recovers income tax from the Inland Revenue;

(iii) the contributor appears as a subscriber of £42.86.

The Fund would be pleased to give further information if desired. It is sometimes possible to furnish alternative forms of agreement to meet special circumstances.

I, _____
of _____

HEREBY COVENANT with KING EDWARD'S HOSPITAL FUND FOR LONDON
that for a period of seven years from the date hereof or during my life whichever
period shall be shorter I will pay annually to the said Fund such a sum as will after
deduction of income tax leave in the hands of the Fund the net sum of £ _____
(_____)

(words) the first of such annual payments to be made on the (a) _____ day of
_____ 19____ and the six subsequent annual payments to be made on the
same day in each of such subsequent years all such sums to be paid from my general
fund of taxed income so that I shall receive no personal or private benefit in either of
the said periods from the said sums or any part thereof.

IN WITNESS whereof I have hereunto set my hand and seal this (b) _____ day
of _____ 19____

SIGNED, SEALED AND DELIVERED by the above-
named in the presence of

Signature _____

Address _____

_____ L.S.

(Signature)

Occupation _____

(a) The date must be later than the date of signing (b)

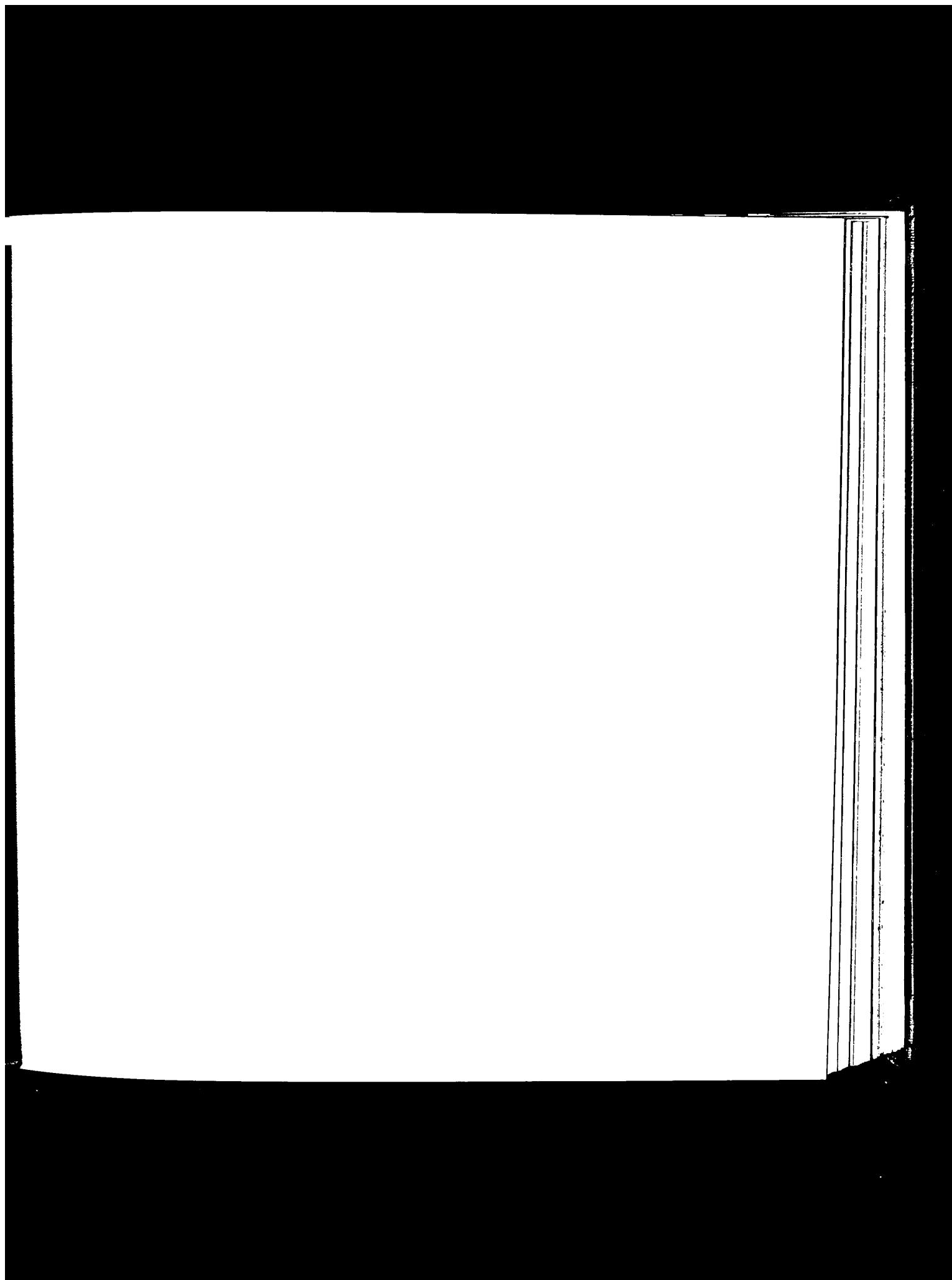
Notes as to Completion of Agreement

(1) The term of seven years commences from the date of signature.

(2) The directions for filling in the dates at (a) and (b) should be carefully observed.

(3) If the seven annual payments are to be made under Banker's Order the date at (a) should be furnished to the Bank.

(4) The agreement duly completed as above should be forwarded to the King's Fund as soon as signed in order that it may be stamped within the allotted time.



© 1973 King Edward's Hospital Fund for London
Printed in England by Alabaster Passmore & Sons Limited
and designed by Steve Storr, Ken and Kate Baynes
Illustrations by Mark Peppe based on photographs by
Chris Ridley. Photograph by Chris Ridley